

February 8, 2021

Lux Exposé: Real Estate



LUX EXPOSÉ

NYC Residences with Romantic Views for Valentine's Day

By Lux Exposé

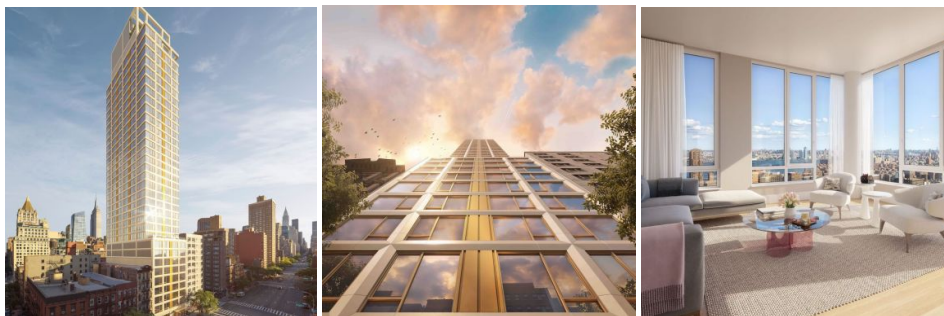
Impressions: N/A



This Valentine's Day, people across the boroughs of New York City will celebrate love from home and there is no better backdrop than a stunning view of the city skyline. Partners are planning candle-lit home-cooked meals, besties will gather for Galentine's get-togethers and friends will host elaborate evenings of self-care. In the buildings listed below, the architects and developers put special attention on creating residences that offer breathtaking, panoramic views. In addition, the interiors of each of these developments feature thoughtful design and exquisite finishes to complete the perfect setting for Valentine's Day at home in NYC.

VU

VU is a new luxury high-rise residence on Manhattan's East Side with architecture by renowned firm SLCE and interiors by acclaimed designer Paris Forino. At 36-stories tall, VU rises far above surrounding buildings, providing gorgeous, unobstructed views of the uptown and downtown skyline.



Credit: Unmarked Studios

February 8, 2021

Lux Exposé: Real Estate

An ideal spot for romance, VU's oversized windows put the city on full display, offering views of the Empire State Building, One World Trade, and the East River. Since most of these views can be enjoyed from the residences themselves, residents could spend a magical Valentines Day right at home.

One Essex Crossing



Courtesy of One Essex Crossing

One Essex Crossing, designed inside and out by acclaimed architecture firm CetraRuddy, is a 14-story luxury condominium building that spans a full city block between Broome and Delancey Streets and features light-filled residences with skyline views, shared and private outdoor space, and a wealth of indoor/outdoor amenities.



February 8, 2021

Lux Exposé: Real Estate

The building's elevated 9,000 square-foot amenity garden and glass-enclosed Sun Room are perfect spots to hang out and enjoy a beautiful sunset over unobstructed views of the NYC skyline on Valentine's Day with your loved ones. Residents can even order heart-shaped cake pops and champagne to be delivered right to their home from The Market Line, an expansive, bazaar-like marketplace and grocery, through a special room service program.

11 Hoyt



Courtesy of 11 Hoyt

11 Hoyt is a 57-story tower that rises 620 feet and spans almost an entire city block and was designed by MacArthur Fellow Jeanne Gang, founding principal of Studio Gang Architects, with interiors by Michaelis Boyd Associates. The building offers an expansive collection of over 55,000 square-feet of thoughtfully designed indoor and outdoor amenities.

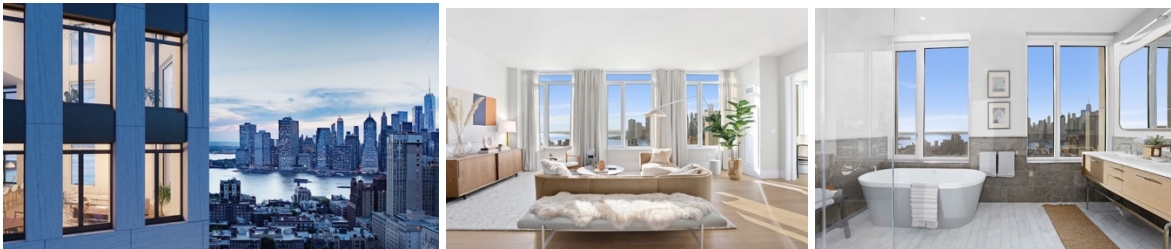


On Valentines Day, residents can make their way up to the building's 32nd-floor Sky Club where they'll be able to hang out by a nice fireplace and take in sunset views over the lower Manhattan skyline and Brooklyn Bridge.

February 8, 2021
Lux Exposé: Real Estate
One Clinton



One Clinton is a collection of 134 modern homes inspired by the historic and graceful surroundings of Brooklyn Heights. Developed by Hudson Companies with architecture by Marvel Architects and design by Studio DB, it's a dream team of Brooklyn creatives and developers.



With its gracious limestone facade and elegant silhouette, One Clinton's triangular profile recalls the celebrated Flatiron Building and provides residents with panoramic views across Brooklyn, New York Harbor, and Manhattan. The 38-story condo is being built above the site of the old Brooklyn Heights library on Clinton Street with Marvel Architects also designing a new state-of-the-art 26,000 square-foot library for the community.

<https://luxexpose.com/nyc-residences-with-romantic-views-for-valentines-day/>